

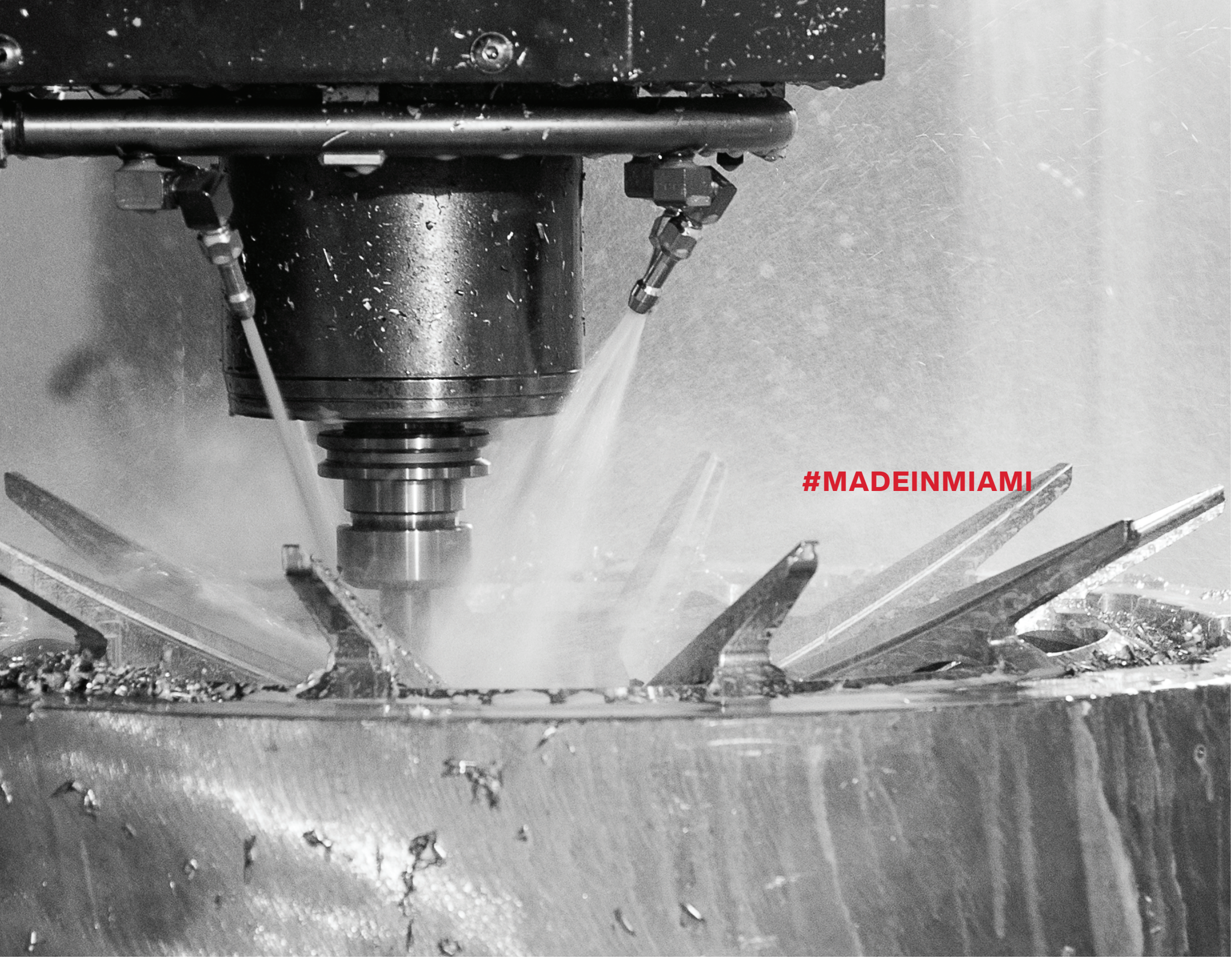


VOSSEN  FORGED

The Vossen Forged program sacrifices nothing in the pursuit of the most elegant precision in the industry. Designed, manufactured and finished entirely in Vossen's TÜV Approved factory, the Vossen Forged lineup spans the brand's core values.

Passion. Performance. Precision.





#MADEINMIAMI



VOSSEN FORGED
EVO
SERIES



EVO-1
Forged Monoblock
Venetian Bronze



EVO-1
Forged 3-Piece
Patina Gold / Gloss Clear



EVO-2
Forged Monoblock
Dark Smoke



EVO-2
Forged 3-Piece
Venetian Bronze / Light Smoke



EVO-3
Forged Monoblock
Bronzino



EVO-3
Forged 3-Piece
Light Smoke / Gloss Black

	<i>Forged Monoblock MSRP</i>	<i>Forged 3-Piece MSRP</i>
18"	N/A	346,500 315,000(税抜)
19"	286,000 260,000(税抜)	363,000 330,000(税抜)
20"	302,500 275,000(税抜)	379,500 345,000(税抜)
21"	319,000 290,000(税抜)	396,000 360,000(税抜)
22"	335,500 305,000(税抜)	355,000 375,000(税抜)
23"	352,000 320,000(税抜)	N/A
24"	368,500 335,000(税抜)	445,500 405,000(税抜)

Prices are per wheel, all widths. For wheel and finishing options, refer to pages 100 - 105.



EVO-4
Forged Monoblock
Patina Gold



EVO-5
Forged Monoblock
Stealth Grey



EVO-6T
Forged Monoblock
Dark Smoke



EVO-4
Forged 3-Piece
Satin Black / Gloss Clear



EVO-5
Forged 3-Piece
Matte Brickell Bronze / Brickell Bronze



EVO-6T
Forged 3-Piece
Satin Black / Gloss Black



VOSSEN FORGED
EVO R
SERIES



EVO-1R
Forged Monoblock
Gloss Clear



EVO-1R
Forged 3-Piece
Matte Midnight Smoke / Gloss Black



EVO-2R
Forged Monoblock
Gloss Clear



EVO-2R
Forged 3-Piece
Matte Brickell Bronze / Brickell Bronze



EVO-3R
Forged Monoblock
Bronzino



EVO-3R
Forged 3-Piece
Satin Black / Gloss Black

	<i>Forged Monoblock MSRP</i>	<i>Forged 3-Piece MSRP</i>
18"	N/A	401,500 365,000(税抜)
19"	341,000 310,000(税抜)	418,000 380,000(税抜)
20"	357,500 325,000(税抜)	434,500 395,000(税抜)
21"	374,000 340,000(税抜)	451,000 410,000(税抜)
22"	335,000 355,000(税抜)	467,500 425,000(税抜)
23"	407,000 370,000(税抜)	N/A
24"	423,500 385,000(税抜)	500,500 455,000(税抜)

Includes:
Lightening Pockets

Prices are per wheel, all widths. For wheel and finishing options, refer to pages 100 - 105.



EVO-4R

Forged Monoblock

Light Smoke



EVO-5R

Forged Monoblock

Dark Smoke



EVO-6TR

Forged Monoblock

Matte Midnight Smoke



EVO-4R

Forged 3-Piece

Dark Smoke / Gloss Black



EVO-5R

Forged 3-Piece

Gloss Clear / Gloss Clear



EVO-6TR

Forged 3-Piece

Patina Gold / Patina Gold



VOSSEN FORGED
SERIES 21

	<i>Forged Monoblock MSRP</i>	<i>Forged 3-Piece MSRP</i>
18"	N/A	401,500 365,000(税抜)
19"	341,000 310,000(税抜)	418,000 380,000(税抜)
20"	357,500 325,000(税抜)	434,500 395,000(税抜)
21"	374,000 340,000(税抜)	451,000 410,000(税抜)
22"	390,500 355,000(税抜)	467,500 425,000(税抜)
23"	407,000 370,000(税抜)	N/A
24"	423,500 385,000(税抜)	500,500 455,000(税抜)

Includes:
Lightening Pockets

Prices are per wheel, all widths. For wheel and finishing options, refer to pages 100 - 105.



S21-01
Forged Monoblock
Vossen Red



S21-01
Forged 3-Piece
Matte Brickell Bronze / Brickell Bronze



S21-01
Forged Monoblock
Matte Gunmetal



VOSSEN FORGED
SERIES 17



S17-01
Forged Monoblock
Patina Gold



S17-01
Forged 3-Piece
Gloss Clear / Gloss Black



S17-02
Forged Monoblock
Gloss Gunmetal



S17-04
Forged Monoblock
Stealth Grey



S17-06
Forged Monoblock
Satin Bronze



S17-06
Forged 3-Piece
Space Grey / Light Smoke

	<i>Forged Monoblock MSRP</i>	<i>Forged 3-Piece MSRP</i>
18"	N/A	346,500 315,000(税別)
19"	286,000 260,000(税別)	363,000 330,000(税別)
20"	302,500 275,000(税別)	379,500 345,000(税別)
21"	319,000 290,000(税別)	396,000 360,000(税別)
22"	335,500 305,000(税別)	412,500 375,000(税別)
23"	352,000 320,000(税別)	N/A
24"	368,500 335,000(税別)	445,500 405,000(税別)

Prices are per wheel, all widths. For wheel and finishing options, refer to pages 100 - 105.



S17-07
Forged Monoblock
Gloss Clear



S17-07
Forged 3-Piece
Satin Black / Gloss Black



S17-14
Forged Monoblock
Gloss Black



S17-11
Forged Monoblock
Gloss Clear



S17-12
Forged Monoblock
Matte Midnight Smoke



S17-14
Forged 3-Piece
Gloss Clear / Gloss Clear



S17-13
Forged Monoblock
Satin Black



S17-13T
Forged Monoblock
Light Smoke



S17-15T
Forged Monoblock
Gloss Clear

*Floating C/capは別売です。お手元の純正キャップをご使用下さい。

*Floating C/capは別売です。お手元の純正キャップをご使用下さい。



VOSSEN FORGED
M-X
SERIES



M-X4T
Forged Monoblock
Venetian Bronze



M-X4T
Forged 3-Piece
Light Smoke / Fountain Blue



M-X5
Forged Monoblock
Satin Bronze



M-X5
Forged 3-Piece
Gloss Clear / Gloss Clear



M-X6
Forged Monoblock
Midnight Smoke



M-X6
Forged 3-Piece
Patina Gold / Dark Smoke

	<i>Forged Monoblock MSRP</i>	<i>Forged 3-Piece MSRP</i>
18"	N/A	346,500 315,000(税抜)
19"	286,000 260,000(税抜)	363,000 330,000(税抜)
20"	302,500 275,000(税抜)	379,500 345,000(税抜)
21"	319,000 290,000(税抜)	396,000 360,000(税抜)
22"	335,500 305,000(税抜)	412,500 375,000(税抜)
23"	352,000 320,000(税抜)	N/A
24"	368,500 335,000(税抜)	445,500 405,000(税抜)

Prices are per wheel, all widths. For wheel and finishing options, refer to pages 100 - 105.



M-X1

Forged Monoblock

Light Smoke



M-X1

Forged 3-Piece

Patina Gold / Satin Black



ML-X1

Forged Monoblock

Satin Black



M-X2

Forged Monoblock

Gloss Gold



M-X2

Forged 3-Piece

Stealth Grey / Gloss Clear



ML-X2

Forged Monoblock

Scarlet Red



M-X3

Forged Monoblock

Matte Clear



M-X3

Forged 3-Piece

Dark Smoke / Gloss Clear



ML-X3

Forged Monoblock

Light Smoke



VOSSEN FORGED
M-R
SERIES

	<i>Forged Monoblock MSRP</i>
19"	258,500 235,000(税抜)
20"	275,000 250,000(税抜)
21"	291,500 265,000(税抜)
22"	308,000 280,000(税抜)
23"	324,500 295,000(税抜)
24"	341,000 310,000(税抜)



ML-R1
Forged Monoblock
Gloss Clear



ML-R2
Forged Monoblock
Dark Smoke



ML-R3
Forged Monoblock
Satin Black

Prices are per wheel, all widths. For wheel and finishing options, refer to pages 100 - 105.

*Floating C/capは別売です。



VOSSEN FORGED
GNS
SERIES

19"

*Forged
Monoblock
MSRP*

231,000
210,000(税抜)

20"

247,500
225,000(税抜)

21"

264,000
240,000(税抜)

22"

280,500
255,000(税抜)

23"

297,000
270,000(税抜)

24"

313,500
285,000(税抜)

Prices are per wheel, all widths. For wheel and finishing options, refer to pages 100 - 105.



GNS-1
Forged Monoblock
Satin Black



GNS-2
Forged Monoblock
Dark Smoke



GNS-3
Forged Monoblock
Matte Brickell Bronze



VOSSEN FORGED
ERA
SERIES



ERA-1
Forged 3-Piece
Matte Brickell Bronze / Brickell Bronze



ERA-1
Forged Monoblock
Light Smoke



ERA-2
Forged 3-Piece
Satin Black / Gloss Clear



ERA-3
Forged 3-Piece
Patina Gold / Gloss Clear



ERA-4
Forged 3-Piece
Light Smoke / Light Smoke

	<i>Forged Monoblock MSRP</i>	<i>Forged 3-Piece MSRP</i>
18"	N/A	291,500 265,000(税抜)
19"	258,500 235,000(税抜)	308,000 280,000(税抜)
20"	275,000 250,000(税抜)	324,500 295,000(税抜)
21"	291,500 265,000(税抜)	341,000 310,000(税抜)
22"	308,000 280,000(税抜)	357,500 325,000(税抜)
23"	324,500 295,000(税抜)	N/A
24"	341,000 310,000(税抜)	390,500 355,000(税抜)

Prices are per wheel, all widths. For wheel and finishing options, refer to pages 100 - 105.



VOSSEN FORGED
HC
SERIES



HC-1
Forged Monoblock
Textured Gunmetal



HC-1
Forged 3-Piece
Midnight Smoke / Light Smoke



HC-2
Forged Monoblock
Gloss Gold



HC-2
Forged 3-Piece
Fountain Blue / Space Grey



HC-3
Forged Monoblock
Dark Smoke



HC-3
Forged 3-Piece
Satin Black / Dark Smoke

	<i>Forged Monoblock MSRP</i>	<i>Forged 3-Piece MSRP</i>
18"	N/A	346,500 315,000(税抜)
19"	286,000 260,000(税抜)	363,000 330,000(税抜)
20"	302,500 275,000(税抜)	379,500 345,000(税抜)
21"	319,000 290,000(税抜)	396,000 360,000(税抜)
22"	335,500 305,000(税抜)	412,500 375,000(税抜)
23"	352,000 320,000(税抜)	N/A
24"	368,500 335,000(税抜)	445,500 405,000(税抜)

Prices are per wheel, all widths. For wheel and finishing options, refer to pages 100 - 105.



VOSSEN FORGED
LC2
SERIES



LC2-C1
Forged Monoblock
Gloss Clear



LC2-B2
Forged Monoblock
Fountain Blue

19"

Forged Monoblock MSRP
258,500
235,000(税抜)

20"

275,000
250,000(税抜)

21"

291,500
265,000(税抜)

22"

308,000
280,000(税抜)

23"

324,500
295,000(税抜)

24"

341,000
310,000(税抜)

LC2 LIP STYLES



1



2



3



A



A1



A2



A3

LC2 CENTER STYLES



B



B1



B2



B3



C



C1



C2



C3

Prices are per wheel, all widths. For wheel and finishing options, refer to pages 100 - 105.



VOSSEN FORGED
LC
SERIES



LC-101
Forged Monoblock
Gloss Clear



LC-103
Forged Monoblock
Midnight Smoke



LC-104
Forged Monoblock
Vintage Rose



LC-104T
Forged Monoblock
Satin Black



LC-105T
Forged Monoblock
Gloss Clear



LC-106T
Forged Monoblock
Gloss Clear

19"

Forged Monoblock MSRP
231,000
210,000(税抜)

20"

247,500
225,000(税抜)

21"

264,000
240,000(税抜)

22"

280,500
255,000(税抜)

23"

297,000
270,000(税抜)

24"

313,500
285,000(税抜)

Prices are per wheel, all widths. For wheel and finishing options, refer to pages 100 - 105.



VOSSEN FORGED
CG
SERIES



CG-203
Forged Monoblock
Satin Black



CG-205T
Forged Monoblock
Light Smoke



CG-205
Forged Monoblock
Platinum



CG-205
Forged 3-Piece
Vossen Red / Space Grey



CG-209T
Forged Monoblock
Light Smoke



CG-209T
Forged 3-Piece
Satin Bronze / Gloss Black

	<i>Forged Monoblock MSRP</i>	<i>Forged 3-Piece MSRP</i>
18"	N/A	319,000 290,000(税抜)
19"	258,500 235,000(税抜)	335,500 305,000(税抜)
20"	275,000 250,000(税抜)	352,000 320,000(税抜)
21"	291,500 265,000(税抜)	368,500 335,000(税抜)
22"	308,000 280,000(税抜)	385,000 350,000(税抜)
23"	324,500 295,000(税抜)	N/A
24"	341,000 310,000(税抜)	418,000 380,000(税抜)

Prices are per wheel, all widths. For wheel and finishing options, refer to pages 100 - 105.



VOSSEN FORGED
PRECISION
SERIES



VPS-312
Forged Monoblock
Gloss Clear



VPS-310
Forged Monoblock
Gloss Gunmetal



VPS-305
Forged Monoblock
Dark Smoke



VPS-305T
Forged Monoblock
Satin Black



VPS-306
Forged Monoblock
Satin Bronze
*intini lip



VPS-307
Forged Monoblock
Dark Smoke

19"

*Forged
3-Piece
MSRP*
286,000
260,000(税抜)

20"

302,500
275,000(税抜)

21"

319,000
290,000(税抜)

22"

335,500
305,000(税抜)

23"

352,000
320,000(税抜)

24"

368,500
335,000(税抜)

Prices are per wheel, all widths. For wheel and finishing options, refer to pages 100 - 105.

NOVITEC | VOSSEN

Novitec and Vossen's shared focus on precision craftsmanship, revolutionary design and producing the highest quality product within the automotive industry have led to Lamborghini, McLaren, Rolls-Royce and Tesla specific wheels, tailored perfectly to each model.

More info: www.novitec.com



NF8

Dark Smoke

Forged
Monoblock
MSRP / SET

458 / 488 / FF / Portofino / GTC4Lusso / California

21X9 / 22X12

ASK

812 Superfast

21X10 / 22X12.5

ASK

F12

21X9.5 / 22X12

ASK

*1 為替の変動により価格が変動いたします
*2 コラボレーションホイールは通常製品と取扱いが異なります
詳細はお問い合わせ下さい

Includes:
Vehicle Tailored Engineering
Lightening Pockets
OEM Lug Bolts/Nuts
OEM Center Cap

For wheel and finishing options, refer to pages 100 - 105.



NF9

Gloss Clear

*Forged
Monoblock
MSRP / SET*

458 / 488 / FF / Portofino / GTC4Lusso / California

21X9 / 22X12

ASK

812 Superfast

21X10 / 22X12.5

ASK

F12

21X9.5 / 22X12

ASK

*1 為替の変動により価格が変動いたします
*2 コラボレーションホイールは通常製品と取扱いが異なります
詳細はお問い合わせ下さい

Includes:
Vehicle Tailored Engineering
Lightening Pockets
OEM Lug Bolts/Nuts
OEM Center Cap

For wheel and finishing options, refer to pages 100 - 105.



NF10

Satin Bronze

*Forged
Monoblock
MSRP / SET*

458 / 488 / FF / Portofino / GTC4Lusso / California

21X9 / 22X12

ASK

812 Superfast

21X10 / 22X12.5

ASK

F12

21X9.5 / 22X12

ASK

*1 為替の変動により価格が変動いたします
*2 コラボレーションホイールは通常製品と取扱いが異なります
詳細はお問い合わせ下さい

Includes:
Vehicle Tailored Engineering
Lightening Pockets
OEM Center Cap

For wheel and finishing options, refer to pages 100 - 105.



SP2

Gloss Clear

Forged
Monoblock
MSRP / SET

Wraith / Dawn / Ghost

22X9.5 / 22X10.5

ASK

Cullinan / Phantom

24X10

ASK

*1 為替の変動により価格が変動いたします
*2 コラボレーションホイールは通常製品と取扱いが異なります
詳細はお問い合わせ下さい

Includes:
Vehicle Tailored Engineering
OEM Lug Bolts/Nuts
OEM Center Cap
Forged Billet Plate

For wheel and finishing options, refer to pages 100 - 105.



NL4

Brickell Bronze

Forged
Monoblock
MSRP / SET

Aventador

20X9 / 21X13

ASK

Huracan

20X9 / 21X12.5

ASK

Urus

23X10.5 / 23X12

ASK

*1 為替の変動により価格が変動いたします
*2 コラボレーションホイールは通常製品と取扱いが異なります
詳細はお問い合わせ下さい

Includes:
Vehicle Tailored Engineering
Lightening Pockets
OEM Lug Bolts/Nuts
OEM Center Cap
Center Lock

For wheel and finishing options, refer to pages 100 - 105.



MC3

Gloss Black

Forged
Monoblock
MSRP / SET

600LT

20X8.5 / 21X11.5

ASK

570

20X9 / 21X11.5

ASK

720 / 650

20X9 / 21X12

ASK

*1 為替の変動により価格が変動いたします
*2 コラボレーションホイールは通常製品と取扱いが異なります
詳細はお問い合わせ下さい

Includes:
Vehicle Tailored Engineering
Lightening Pockets
OEM Lug Bolts/Nuts
OEM Center Cap
Center Lock

For wheel and finishing options, refer to pages 100 - 105.



NV2

Gloss Charcoal

Forged
Monoblock
MSRP / SET

Model 3

21X9 / 21X10

ASK

Model S

21X9 / 21X9.5

ASK

Model X

22X9.5 / 22X10.5

ASK

*1 為替の変動により価格が変動いたします
*2 コラボレーションホイールは通常製品と取扱いが異なります
詳細はお問い合わせ下さい

Includes:
Vehicle Tailored Engineering
Lightening Pockets
OEM Lug Bolts/Nuts
OEM Center Cap

For wheel and finishing options, refer to pages 100 - 105.



The Urban Automotive collaborative wheels are designed and engineered exclusively for Range Rover, G-Class & Bentayga applications.

Complementing Urban Automotive's variety of aero kits, the UV Series offers complex aesthetics with a variety of finishing styles to showcase its different spoke heights.

More info: www.urban-automotive.co.uk



UV1
Gloss Gunmetal



UV2
Dark Smoke

*Forged
Monoblock
MSRP / SET*

Range Rover / G-Class / Bentayga

22"

1,298,000
1,180,000(税抜)

Range Rover / G-Class / Bentayga

23"

1,408,000
1,280,000(税抜)

Range Rover / G-Class / Bentayga

24"

1,518,000
1,380,000(税抜)

*1 為替の変動により価格が変動いたします
*2 コラボレーションホイールは通常製品と取扱いが異なります
詳細はお問い合わせ下さい

Includes:
Vehicle Tailored Engineering
OEM Lug Bolts/Nuts (Range Rover Only)

For wheel and finishing options, refer to pages 100 - 105.



UV3

Midnight Smoke

Forged
Monoblock
MSRP / SET

Range Rover / G-Class / Bentayga

22"

1,298,000
1,180,000(税抜)

Range Rover / G-Class / Bentayga

23"

1,408,000
1,280,000(税抜)

Range Rover / G-Class / Bentayga

24"

1,518,000
1,380,000(税抜)

*1 為替の変動により価格が変動いたします
*2 コラボレーションホイールは通常製品と取扱いが異なります
詳細はお問い合わせ下さい

Includes:
Vehicle Tailored Engineering



UV4

Textured Black

Forged
Monoblock
MSRP / SET

G-Class

22"

1,298,000
1,180,000(税抜)

G-Class

23"

1,408,000
1,280,000(税抜)

G-Class

24"

1,518,000
1,380,000(税抜)

*1 為替の変動により価格が変動いたします
*2 コラボレーションホイールは通常製品と取扱いが異なります
詳細はお問い合わせ下さい

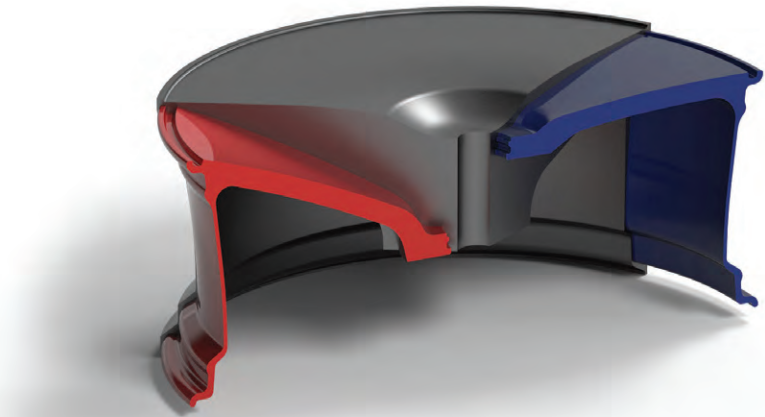
Includes:
Vehicle Tailored Engineering

MONOBLOCK FORGINGS

19"	19 x 8.5	19 x 10	19 x 11
	19 x 9	19 x 10.5	19 x 12
	19 x 9.5		
20"	20 x 8.5	20 x 10.5	20 x 12
	20 x 9	20 x 11	20 x 12.5
	20 x 9.5	20 x 11.5	20 x 13
	20 x 10		
21"	21 x 9	21 x 11	21 x 13
	21 x 9.5	21 x 11.5	
	21 x 10	21 x 12	
	21 x 10.5	21 x 12.5	
22"	22 x 8.5	22 x 10	22 x 11.5
	22 x 9	22 x 10.5	22 x 12
	22 x 9.5	22 x 11	22 x 12.5
23"	23 x 10	23 x 12	
	23 x 10.5		
	23 x 11		
24"	24 x 10		

CONCAVE PROFILE FLEXIBILITY

All Vossen Forged wheels are machined using Vossen's proprietary forging design. In order to provide any vehicle with the most efficient spoke profile, our forgings are engineered with extra material on the face in order to accommodate everything from flat to super deep concave profiles. This proprietary forging design allows us to produce an 8.5" width with maximum concavity equal to that of a 13".



■ Raw Forging
 ■ Flat Profile
 ■ Deep Profile

MONOBLOCK WHEEL OPTIONS			
P/N	Wheel Option	Description	MSRP (PER WHEEL)
W01	Infini-lip	Seamless and unobstructed transition from the wheel face to barrel フラットリム形状(フェイス後部のリムの段差無)*VPSのみ	27,500
W02	Vehicle Tailored Engineering	Vehicle specific concave profile and FEA weight optimization 車両に合わせた完全オーダーメイド(コンケーブ量を最大化)	22,000
W03	Lightening Pockets	Weight reducing pockets milled into the back pad of the wheel 取付 PAD 面の駄肉を削りホイールを軽量化	11,000
W04	OEM Lug Bolts/ Nuts	Machine lug holes for use with OEM lug fasteners 純正ボルト/ ナット仕様	11,000
W05	OEM Center Cap	Machine cap detail for use with OEM center cap 純正センターキャップ仕様*純正キャップは付属しません	13,750
W06	Center Lock	Wheel design modified for center lock application センターロック仕様	24,750
W07-A	Cap Finish - Standard	Option 1: Polished / Brushed with red 'V' shield 標準(外側ブラッシュド + 中央部ポリッシュ + 粉体クリアー / レッド V マーク)	Included
W07-B	Cap Finish - Color Matched	Option 2: Color matched to wheel with red 'V' shield オプション(ホイール本体と同色又は同仕上にする)	3,300
W08	Personalized Engraving	Personalized note on the inner lip インナーリム部へ任意の文字を彫る (最大 50 文字で数字・アルファベット大文字のみ)	3,300
W10	Color Matched Weights	Wheel weights color matched to finish of wheel ホイール同色/バランスウエイト	3,300
W16	Forged Billet Plate	Color matched to wheel ホイール同色センタープレート	22,000
W17	VOSSEN Floating Emblem	Chrome or Black Trim クロームまたは黒の縁	11,000
W18	OE-Rolls Royce Floating Emblem	Color matched to wheel クロームまたは黒の縁	33,000

価格は税込です

MONOBLOCK FINISH OPTIONS		
P/N	Description	MSRP (PER WHEEL)
F01	Any gloss, satin, matte or textured solid powder coat 非透明パウダーコート *24色より選択	Included
F02	Brushed / gloss clear or transparent color powder coat 全面ブラッシュ / クリアー or カラークリアー	33,000
F03	Polished / gloss clear or transparent color powder coat 全面ポリッシュ / クリアー or カラークリアー	33,000
F04	Polished / brushed face / gloss clear or transparent color powder coat ポリッシュ + 天面ブラッシュ / クリアー or カラークリアー	41,250
F06	Polished / brushed barrel / gloss clear or transparent color powder coat ポリッシュ + リムブラッシュ / クリアー or カラークリアー	38,500
F08	Polished / brushed face and barrel / gloss clear or transparent color powder coat ブラッシュ + ウィンドウ(デザイン開口部)ポリッシュ / クリアー or カラークリアー	44,000
F10	Marbled / gloss clear or transparent color powder coat 全面ストーン調仕上げ / クリアー or カラークリアー	22,000
F11	Marbled / brushed face / gloss clear or transparent color powder coat ストーン調仕上げ + 天面ブラッシュド / クリアー or カラークリアー	30,250
F12	Marbled / brushed barrel / gloss clear or transparent color powder coat ストーン調仕上げ + リムブラッシュド / クリアー or カラークリアー	27,500
F13	Marbled / brushed face and barrel / gloss clear or transparent color powder coat ストーン調仕上げ + ウィンドウ(デザイン開口部)ポリッシュ / クリアー or カラークリアー	33,000

価格は税込です

3-PIECE WHEEL OPTIONS			
P/N	Wheel Option	Description	MSRP (PER WHEEL)
W03	Lightening Pockets	Weight reducing pockets milled into the back pad of the wheel 取付 PAD 面の駄肉を削りホイールを軽量化	11,000
W04	OEM Lug Bolts/Nuts	Machine lug holes for use with OEM lug fasteners 純正ボルト / ナット仕様	11,000
W05	OEM Center Cap	Machine cap detail for use with OEM center cap 純正センターキャップ仕様 * 純正キャップは付属しません	13,750
W06	Center Lock	Entire wheel design modified for center lock application センターロック仕様	22,000
W07-A	Cap Finish - Standard	Option 1: Polished / Brushed with red "V" shield 標準 (外側ブラッシュド + 中央部ポリッシュ + 粉体クリアー / レッド V マーク)	Included
W07-B	Cap Finish - Color Matched	Option 2: Color matched to wheel with red "V" shield オプション (ホイール本体と同色又は同仕上にする)	3,300
W15-A/B/C	Titanium Fasteners - Standard	標準 : チタンピアスボルト A) チタン B) ブラック C) ゴールド	Included
W15-D	Titanium Fasteners - Custom	Any solid or transparent color powder coat オプション : カラーピアスボルト (48 色のパウダーカラーから選択可能)	11,000

価格は税込です



3-PIECE FINISH OPTIONS		
P/N	Description	MSRP (PER WHEEL)
CENTER		
F01	Any gloss, satin, matte or textured solid powder coat 非透明パウダーコート *24色より選択	Included
F02	Brushed / gloss clear or transparent color powder coat 全面ブラッシュ / クリアー or カラークリアー	33,000
F03	Polished / gloss clear or transparent color powder coat 全面ポリッシュ / クリアー or カラークリアー	33,000
F04	Polished / brushed face / gloss clear or transparent color powder coat ポリッシュ + 天面ブラッシュ / クリアー or カラークリアー	41,250
F10	Marbled / gloss clear or transparent color powder coat 全面ストーン調仕上げ / クリアー or カラークリアー	22,000
F11	Marbled / brushed face / gloss clear or transparent color powder coat ストーン調仕上げ + 天面ブラッシュド / クリアー or カラークリアー	30,250
OUTER (LIP)		
FOS	Any gloss, satin, matte or textured solid powder coat 非透明パウダーコート *24色より選択	Included
FOB	Brushed / gloss clear or transparent color powder coat 全面ブラッシュ / クリアー or カラークリアー	19,250
FOP	Polished / gloss clear or transparent color powder coat 全面ポリッシュ / クリアー or カラークリアー	19,250
INNER		
FIS-A	Satin Black ソリッドカラー / サテンブラック C26	Included
FIS-B	Any gloss, satin, matte or textured solid powder coat 非透明パウダーコート *24色より選択	11,000
FIB	Brushed / gloss clear or transparent color powder coat 全面ブラッシュ / クリアー or カラークリアー	16,500

価格は税込です

FINISH OPTIONS: TRANSPARENT

価格はフィニッシュオプションページ参照 (p101, p103)



FINISH OPTIONS: SOLID

価格はフィニッシュオプションページ参照 (p101, p103)





ACCESSORIES

Vossen Genuine Parts & Accessories are developed and crafted to compliment your vehicle. From Billet Sport Caps to License Plate Frames, we offer a wide variety of products to cover your vehicle from top to bottom.

VOSSEN LUG BOLTS

Anti-Scratch Washer
Integrated anti-scratch washer preserves wheel finish while improving torque accuracy.



GRADE 10.9
Hardened Alloy Steel

LUG BOLTS

Vossen Wheel Lug Bolts are strictly manufactured from Grade 10.9 hardened alloy steel and tested to ensure the safest and highest performing fasteners for aftermarket wheels. Vossen Wheel Lug Bolts are for conical 60° lug seats only and are meant to be used with the vehicle's thread engagement standards.

LUG BOLT LOCKS

Vossen Wheel Lug Bolt Locks provide an additional level of security with various unique key designs while maintaining the styling and design quality of Vossen's standard lug nuts. Like all Vossen lug bolts and nuts, the locks include an anti-scratch washer that helps preserve the wheel finish while improving torque accuracy.



LUG BOLTS

LUG BOLTS					LUG BOLTS - LOCK					
PACK OF 20					PACK OF 4 + SOCKET					
Vossen P/N	Size	Length	Finish	Retail	Vossen P/N	Size	Length	Finish	Retail	
B1450-30-CH	14x1.50	30mm	Silver	19,360	BL1450-30-CH	14x1.50	30mm	Chrome	5,280	
B1450-35-CH	14x1.50	35mm			BL1450-30-BC	14x1.50	30mm	Black	5,280	
B1450-40-CH	14x1.50	40mm			BL1425-30-CH	14x1.25	30mm	Silver	5,280	
B1450-45-CH	14x1.50	45mm			BL1425-30-BC	14x1.25	30mm	Black	5,280	
B1450-30-BC	14x1.50	30mm	Black	19,360						
B1450-35-BC	14x1.50	35mm								
B1450-40-BC	14x1.50	40mm								
B1450-45-BC	14x1.50	45mm								
B1425-30-CH	14x1.25	30mm	Silver	19,360						
B1425-35-CH	14x1.25	35mm								
B1425-40-CH	14x1.25	40mm								
B1425-45-CH	14x1.25	45mm								
B1425-30-BC	14x1.25	30mm	Black	19,360						
B1425-35-BC	14x1.25	35mm								
B1425-40-BC	14x1.25	40mm								
B1425-45-BC	14x1.25	45mm								



LUG BOLT LOCKS

VOSSEN LUG NUTS



LUG NUTS

Vossen Wheel Lug Nuts are strictly manufactured from 7075 cold-forged aluminum and tested to ensure the safest and highest performing fasteners for aftermarket wheels. Vossen Wheel Lug Nuts are for conical 60° lug seats only and are meant to be used with the vehicle's thread engagement standards.

LUG NUT LOCKS

Vossen Wheel Lug Nut Locks provide an additional level of security with various unique key designs while maintaining the styling and design quality of Vossen's standard lug nuts. Like all Vossen lug bolts and nuts, the locks include an anti-scratch washer that helps preserve the wheel finish while improving torque accuracy.



LUG NUTS

PACK OF 20			
Vossen P/N	Size	Finish	Retail
N1225-BC	12x1.25	Black	
N1225-CH	12x1.25	Silver	
N1225-RD	12x1.25	Red	19,360
N1225-TI	12x1.25	Titanium	
N1225-BL	12x1.25	Blue	
N1250-BC	12x1.50	Black	
N1250-CH	12x1.50	Silver	
N1250-RD	12x1.50	Red	19,360
N1250-TI	12x1.50	Titanium	
N1250-BL	12x1.50	Blue	
N1450-BC	14x1.50	Black	
N1450-CH	14x1.50	Silver	
N1450-RD	14x1.50	Red	19,360
N1450-TI	14x1.50	Titanium	
N1450-BL	14x1.50	Blue	

LUG NUTS - LOCKS

PACK OF 4 + SOCKET			
Vossen P/N	Size	Finish	Retail
NL1225-BC	12x1.25	Black	
NL1225-CH	12x1.25	Silver	
NL1225-RD	12x1.25	Red	5,280
NL1225-TI	12x1.25	Titanium	
NL1225-BL	12x1.25	Blue	
NL1250-BC	12x1.50	Black	
NL1250-CH	12x1.50	Silver	
NL1250-RD	12x1.50	Red	5,280
NL1250-TI	12x1.50	Titanium	
NL1250-BL	12x1.50	Blue	
NL1450-BC	14x1.50	Black	
NL1450-CH	14x1.50	Silver	
NL1450-RD	14x1.50	Red	5,280
NL1450-TI	14x1.50	Titanium	
NL1450-BL	14x1.50	Blue	

VOSSEN



MONDERAJAPAN Inc.

Tel +81 (053) 523-6388 • Fax +81 (053) 523-6388
7992-8 Miyakoda, Kita-ku Hamamatsu, Shizuoka, 4312102
<http://www.vossen.jp> • info@vossen.jp
[@vossen_japan](#)   [@vossenjapan](#)  [@vossen_japan](#)